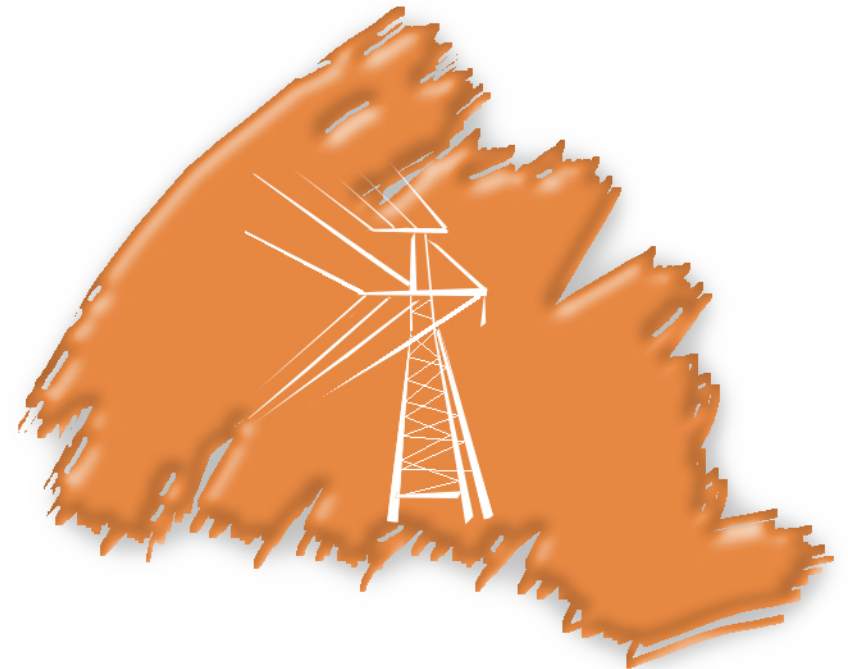


CABLE MANAGEMENT FOR DESKING

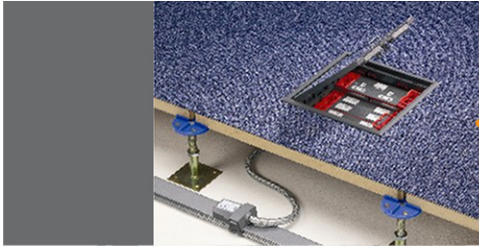
TIDY UP YOUR CABLES AND KEEP
YOU AND YOUR STAFF SAFE



With everyone having a telephone and at least one computer screen on their desk the handling of power, data and telephone cables onto and inside desking has become a major problem for most companies. Not only does the jumble of cables found under and around desking look untidy it can also pose a health and safety risk.

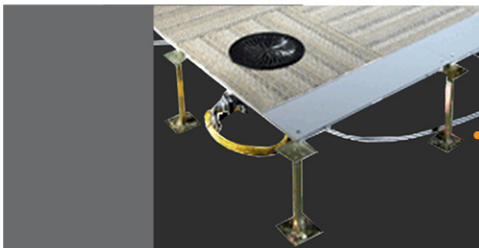
This booklet will show the various options as to how the whole issue of "cable management" can be improved and provide a tidier, safer environment for you and your staff.

1. Provision of Power / Data / Telephone service **to the desking system**
2. Provision of cable management **through the desking system**
3. Power / Data /Telephone **connections on the desk**
4. Power / Data / Telephone **access onto the desktop**
5. Monitor Arms
6. CPU Holders
7. BS6396: British Standard 2008, power in office desking



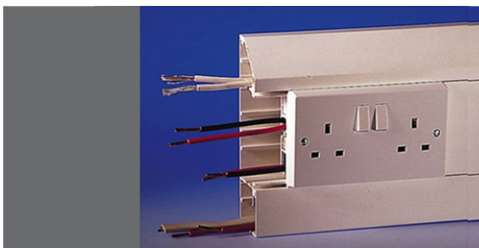
Item: Floor box

Floor boxes can be specified with any combination of Power / Telephone / IT outlets and provide easy connection of services to the desking system.



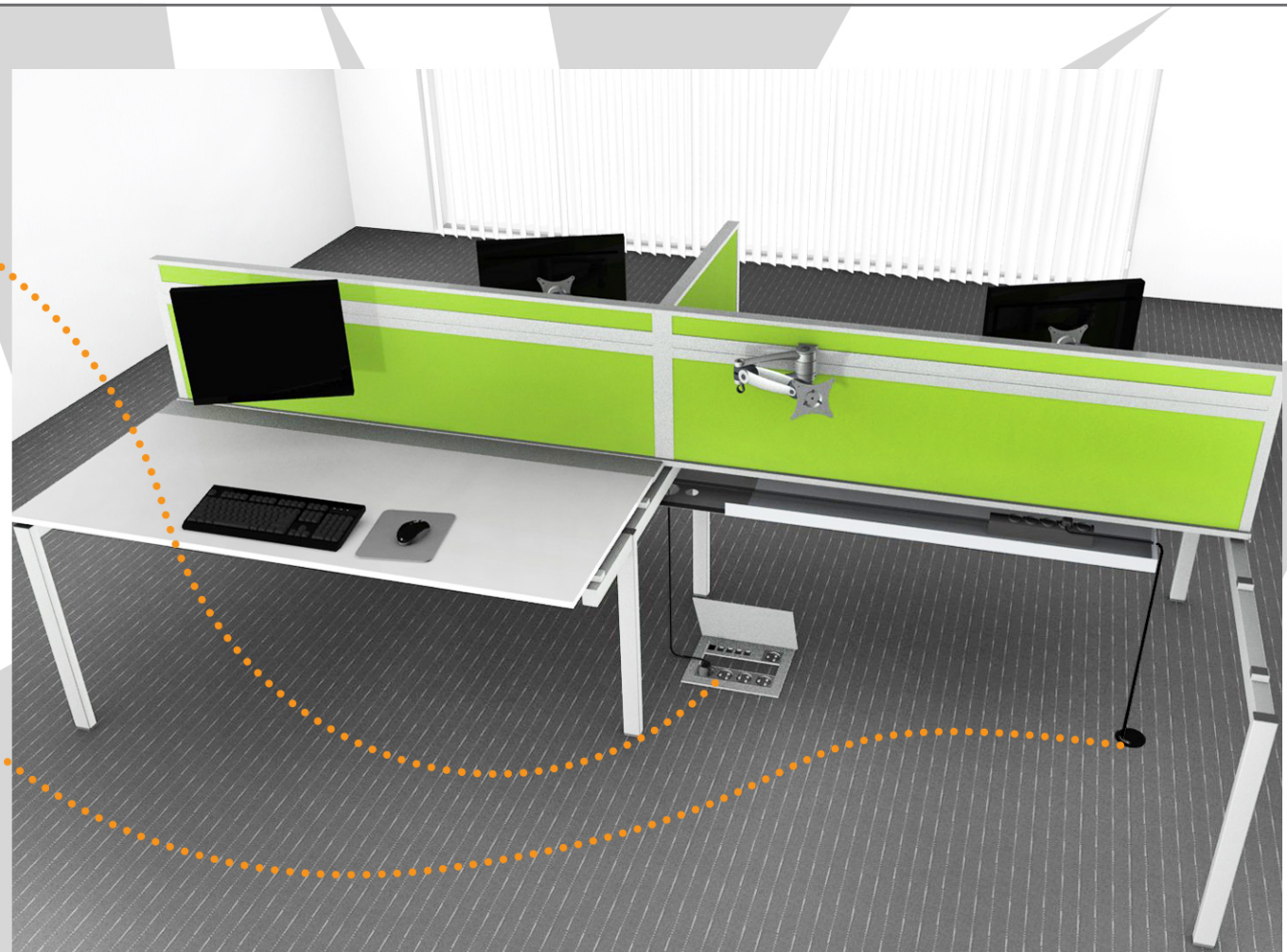
Item: Through Floor Grommets

Through floor grommets provide a low cost method of passing Power / Telephone / IT cables from underfloor connections into the desking system.



Item: Skirting / Dado Trunking

Where raised access floors are not available trunking allows for low cost distribution of Power / Telephone / IT cabling throughout the office.



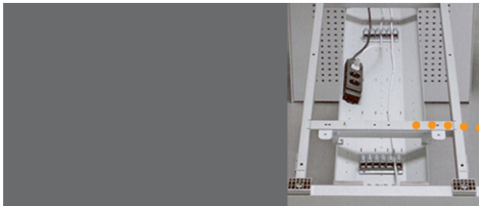
1: PROVISION OF POWER / DATA / TELEPHONE / IT SERVICE TO THE DESKING SYSTEM





Item: Vertical Cable Spine

The Vertical Cable Spine attaches to the underside of the desk and carries the cables neatly from the floor to the desk top.



Item: Solid Tray Containment System

This metal tray containment system allows for a large carrying capacity of cables horizontally throughout the desking system.



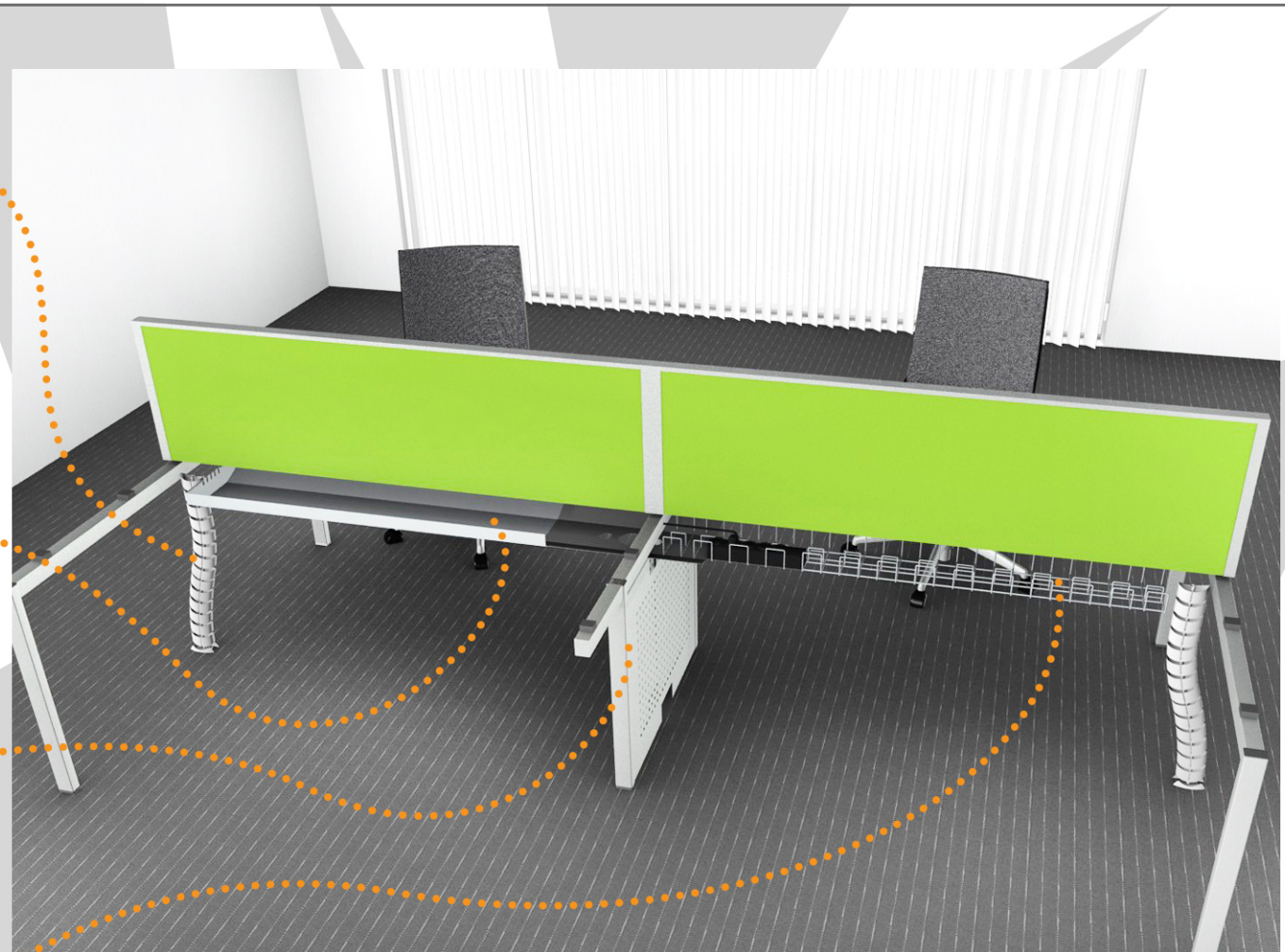
Item: In desk Vertical Cable Management

In this case Vertical Management is integrated into the desking system. This allows the "invisible" carriage of cables from the floor to the underside of the desk.



Item: Wire Cable Containment Basket

This is a low cost method for carrying cables horizontally throughout the desking system.



2: PROVISION OF CABLE MANAGEMENT THROUGH THE DESKING SYSTEM





Item: In Desk Power / Telephone / IT Module

This is a low cost method of providing Power / Data / IT outlets within the desk. Any combination of power, data or IT outlets can be provided to the client's specification. They are simple to install and reconfigure.



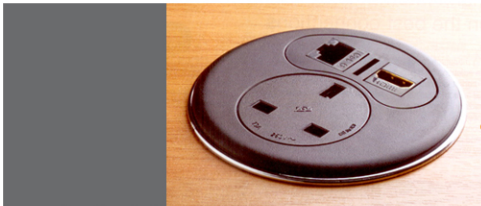
Item: On Desk Module

These units clamp to the desk top and have the same flexibility of configuration as the module in the desk.



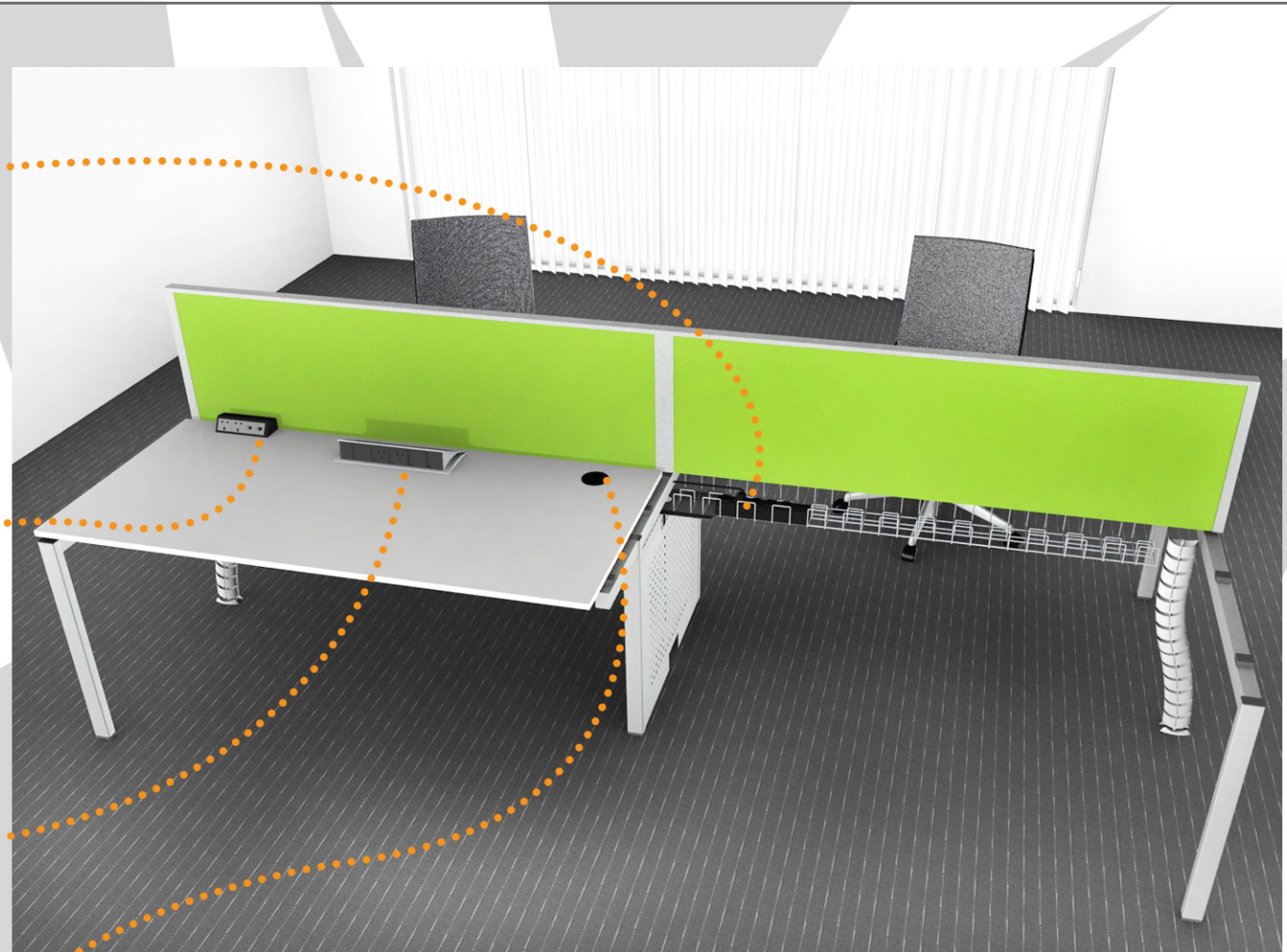
Item: Through Desk Power / Telephone / IT

These flip top units allow easy access to power / data / IT while allowing the connections to be hidden when not in use.



Item: On Desk Power / Telephone / IT Grommet

This is a simple module flush with the desk top allowing very easy access to power / telephone and IT.



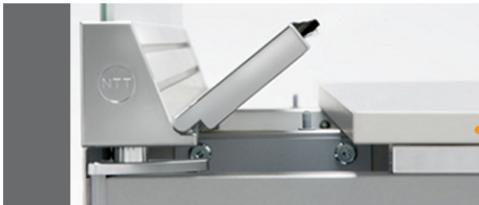
3: POWER / DATA / TELEPHONE CONNECTIONS ON THE DESK





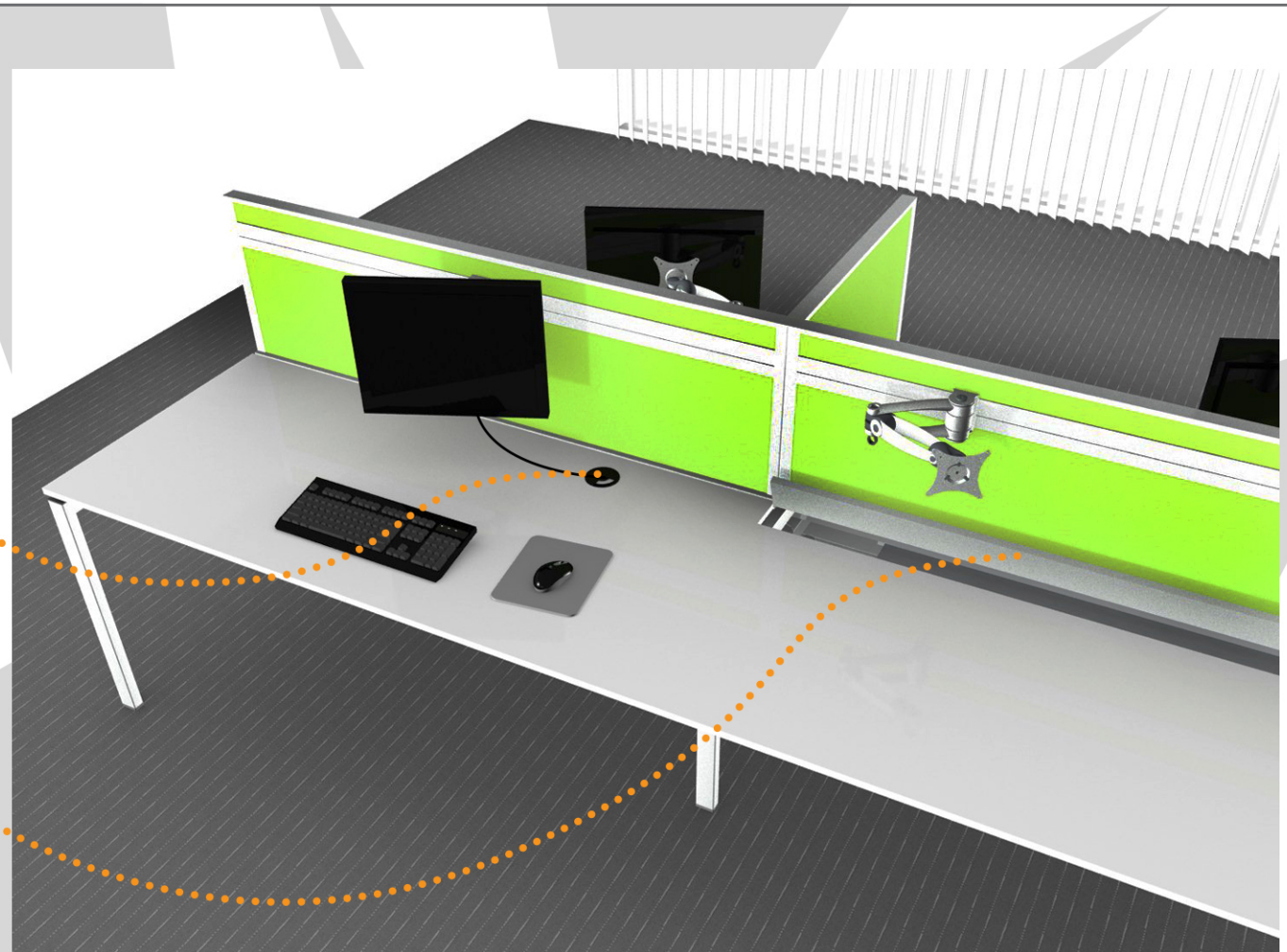
Item: Simple Grommet

This is a low cost method of bringing cables out onto the desk top from underneath the worktop.



Item: Flip Up Lid

The flip up lid is designed to not only allow easy access to the horizontal cable channel under the desk top but also provides somewhere to "dump" all excess cables. This lid runs the full length of the desk.



4: POWER / DATA / TELEPHONE ACCESS ONTO THE DESKTOP





Item: Single Screen Mounted Monitor Arm

The single screen mounted arm has the same adjustability as the single monitor arm but because the monitor arm is attached to the screen more desk surface is freed up.



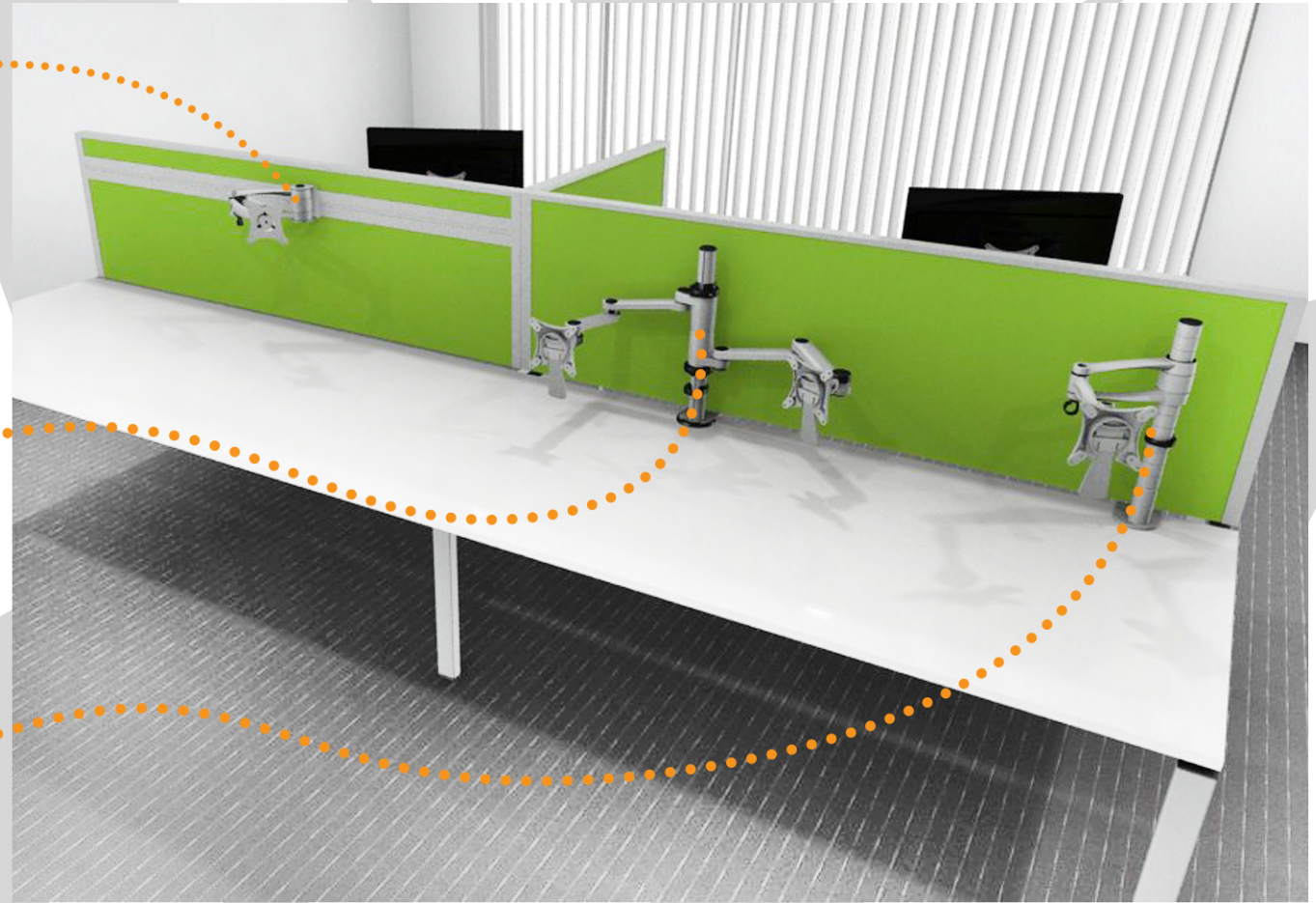
Item: Dual Desk Mounted Arm

The dual monitor arm has exactly the same adjustability as the single monitor arm but allows two monitors to be placed side by side.



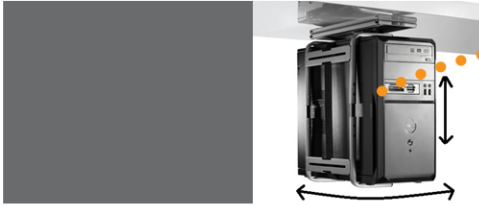
Item: Single Desk Mounted Monitor Arm

The monitor arm has full adjustability for height, angle and tilt which allows the user to set the position of the monitor to fit their exact needs. It can also be positioned anywhere along the length of the desk.



5: MONITOR ARMS





Item: Under Desk Slide and Rotate CPU Holder

The CPU holder allows the CPU to be suspended under the work surface thereby freeing up desk space. The Slide and Rotate mechanism allows access to both the back and front of the processor when required.



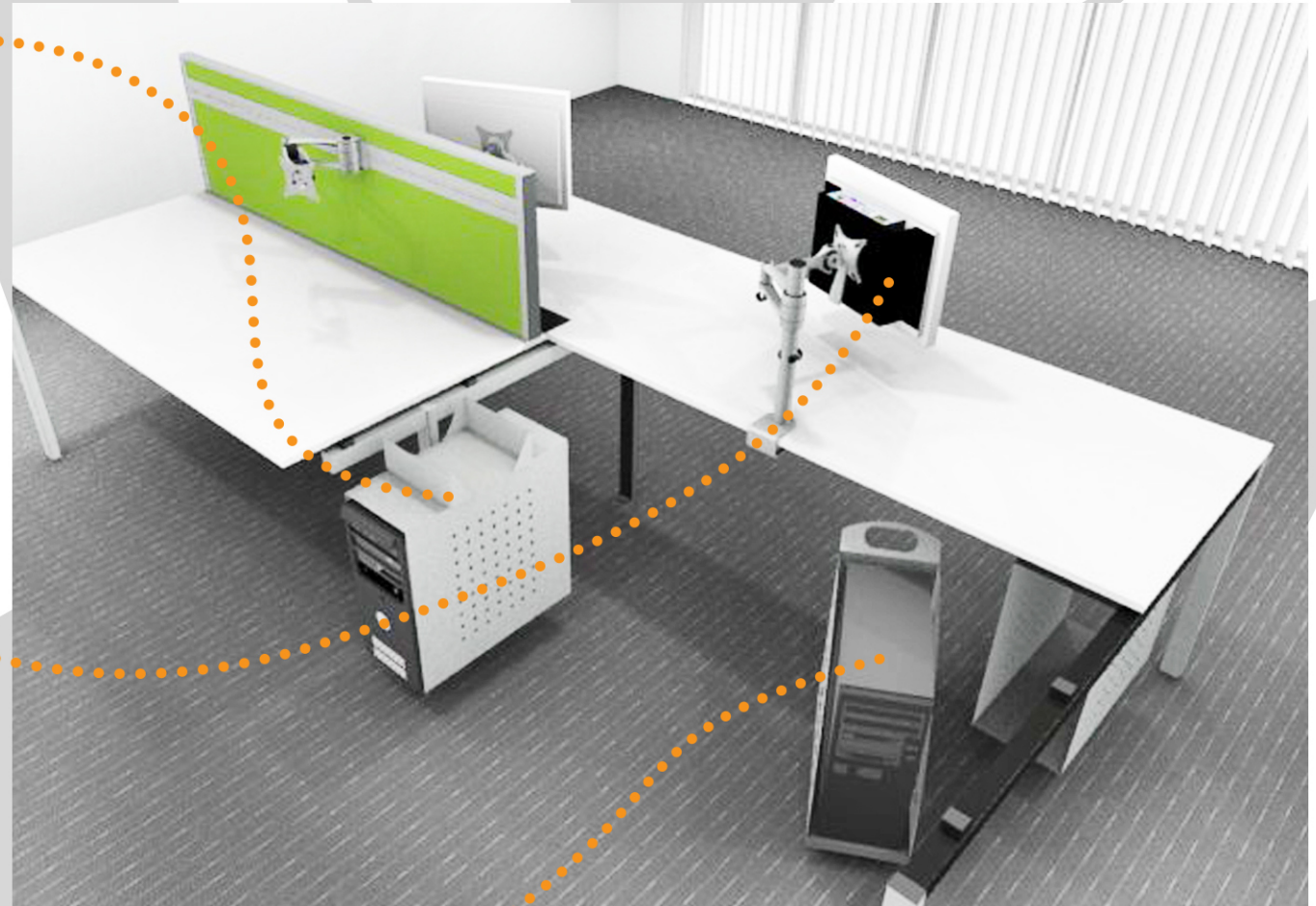
Item: Thin Client Holder

Due to the small size of the Thin Client CPU it can be mounted behind the monitor freeing up desk space while allowing easy and quick access.



Item: CPU Holder On Wheels

The CPU holder housed on wheels has great flexibility as it is mobile and can be moved anywhere around the workstation.



6: CPU HOLDER



The following schematic indicates the maximum fuse rating and configurations allowed under BS6396.

As shown outlet sockets should be individually fused (either 3.15A or 5A) depending on the number of outlets on each 13A mains feed.

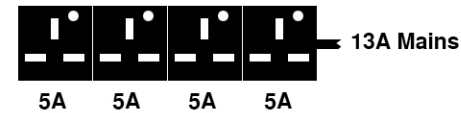
1-4 outlets can be fused at 5A. With 5-6 outlets ALL outlets must be fused at a maximum 3.15A.

The maximum number of outlets permitted is 6 from a 13A supply on the wall or floor. This can be in any combination of daisy chained modules.

In all cases, appliances above 5A MUST be supplied from a separate wall or floor outlet, and NOT via the desk power module system.

Additional earth bonded variations of power modules may be required depending on the desking systems installed.

BS6396 Maximum Configurations



6: BS6396 OVERVIEW

